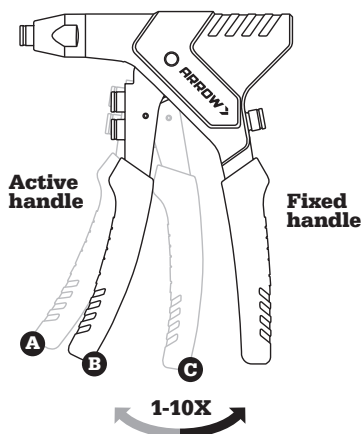
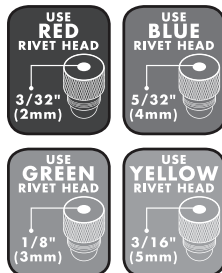


DEFINITION OF RIVET GUN



- A. Reset (position)**
- B. Recover (position)**
- C. Working (position)**

4 SIZE OPTIONS



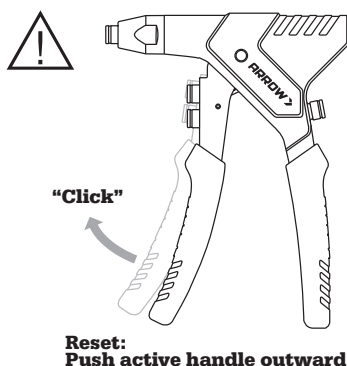
RIVETS USE WITH:

RIVETS: ALUMINUM			
3/32" (2mm)	1/8" (3mm)	5/32" (4mm)	3/16" (5mm)
SHORT MEDIUM LONG	SHORT MEDIUM LONG	SHORT MEDIUM LONG	SHORT MEDIUM LONG
RIVETS: STEEL			
3/32" (2mm)	1/8" (3mm)	5/32" (4mm)	
SHORT MEDIUM LONG	SHORT MEDIUM LONG	SHORT MEDIUM LONG	

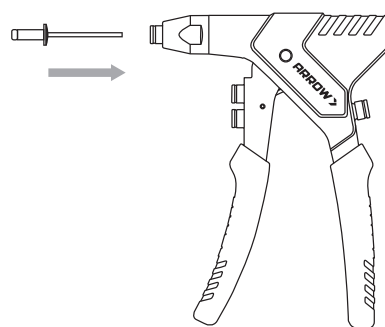
Not recommended for use with 3/16" (5mm) diameter all-steel rivets.
Stainless steel rivets are not for use with manually operated rivet tools.

INSTRUCTION OF RIVET GUN

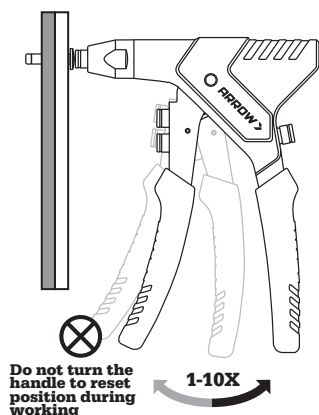
1. RESET THE RIVETER BEFORE WORKING



2. PICK THE CORRECT RIVETS



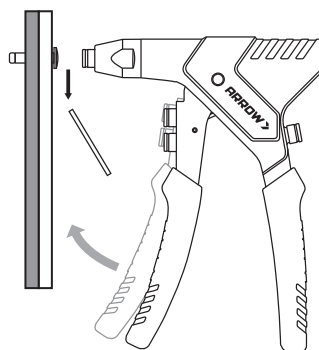
3. SQUEEZE THE ACTIVE HANDLE 1-10X TIMES TILL TO BREAK THE RIVETS MANDREL



WARNING

- A. Do not turn the handle to reset position during working.**
- B. You could keep squeeze the active handle till to break the rivet mandrel just in case you turned the handle to the reset position.**
- C. If you can not break the rivets mandrel after one cycle squeezing (1-10x), you could keep push the rivets and reset the riveter for another cycle operation.**

4. RESET THE RIVETER AFTER WORKING



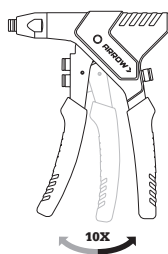
WARNING

- 1. To avoid injury and misuse, please read the instruction before operation.**
- 2. Do not disassemble the riveter on the working position.**
- 3. Please reset the riveter first if you need to disassemble the riveter because of some reason.**

INSTRUCTION OF NOZZLE REPLACEMENT

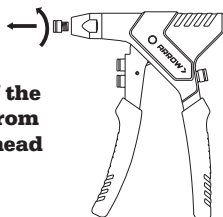
1

Squeeze the active handle 10X till to "no click"



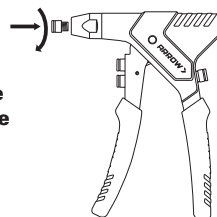
2

Take off the nozzle from riveter head



3

Replace with the new nozzle



4

Reset the riveter for working

